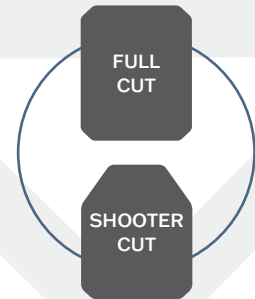
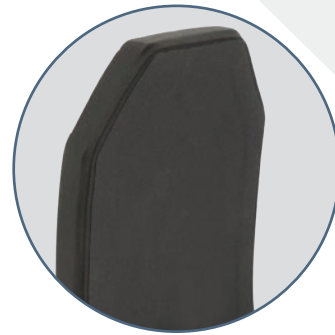
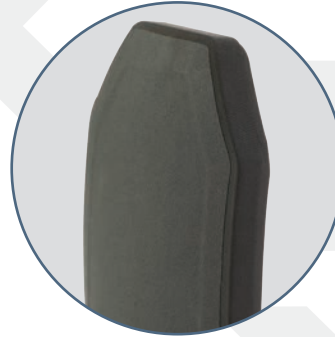




**SLATE  
SOLUTIONS**

# H7100

## Level IV Plate



## FEATURES

- ◇ Made with Ceramic and UHMWPE materials which are processed to create a lighter, thinner, high performing plate
- ◇ NIJ 0101.06 Level IV Certified, Model H7100
- ◇ Multi-Curve design fits to the contours of the body for maximum safety and comfort
- ◇ Rugged, reliable, and stress fracture resistant
- ◇ Fully sealed to protect against liquids, chemicals, and harsh elements

## Special Threat Performance

- ◇ 5.56 x 45mm (M193 Ball)
- ◇ 5.56 x 45mm (M855/SS109)
- ◇ 7.62 x 39mm, M43 (MSC)
- ◇ 7.62 x 39mm (API BZ)
- ◇ 7.62 x 51mm (M-80 Ball)
- ◇ 7.62 x 51mm (M61 AP)
- ◇ 7.62 x 54R (LPS)
- ◇ 7.62 x 54R B-32-API
- ◇ 7.62 x 63mm AP M2 (30-06 M2)

## Specifications

- ◇ NIJ Level IV
- ◇ Stand Alone
- ◇ Multi-Curve (\*based on size)
- ◇ Thickness: 1"
- ◇ 5 year Warranty

## Size and Weight Chart

Size	Curvature	Cut	Weight
6 x 6	Single Curve	Full	2.13 lbs / 0.97 kg
6 x 8	Single Curve	Full	2.87 lbs / 1.30 kg
8 x 10	Multi-Curve	Shooter	4.34 lbs / 1.97 kg
8 x 10	Multi-Curve	Full	4.81 lbs / 2.18 kg
10 x 12	Multi-Curve	Shooter	6.80 lbs / 3.08 kg
10 x 12	Multi-Curve	Full	7.25 lbs / 3.29 kg
11 x 14	Multi-Curve	Shooter	8.78 lbs / 3.98 kg

Tolerances: +/- .25" - +/- 0.25 lbs



**SLATE  
SOLUTIONS**

7060 W. State Road 84, Suite 12, Davie, FL 33317 USA  
info@SlateSolutions.com | SlateSolutions.com

**+1.754.200.6752**