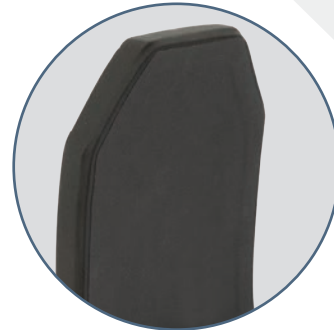
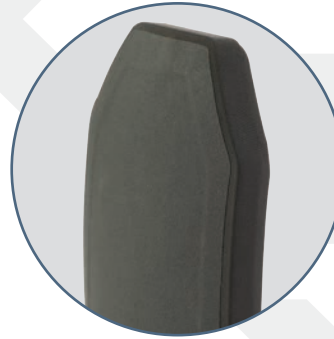




**SLATE
SOLUTIONS**

H3201

Level III+ Plate



FULL
CUT

SHOOTER
CUT

SAPI
CUT

FEATURES

- ◇ Made with Ceramic and UHMWPE materials which are processed to create a lighter, thinner, high performing plate
- ◇ NIJ 0101.06 Level III+, Model H3201
- ◇ Multi-Curve design fits to the contours of the body for maximum safety and comfort
- ◇ Rugged, reliable, and stress fracture resistant
- ◇ Fully sealed to protect against liquids, chemicals, and harsh elements

Special Threat Performance

- ◇ 5.56 x 45mm (M193 Ball)
- ◇ 5.56 x 45mm (M855/SS109)
- ◇ 7.62 x 39mm, M43 (MSC)
- ◇ 7.62. x 51mm (M-80 Ball)

Specifications

- ◇ NIJ Level III+
- ◇ Stand Alone
- ◇ Multi-Curve (*based on size)
- ◇ Thickness: 1"
- ◇ 10-Year Warranty

Size and Weight Chart

Size	Curvature	Cut	Weight
6 x 6	Multi Curve	Full	1.44 lbs / 0.65 kg
6 x 8	Multi Curve	Full	1.94 lbs / 0.88 kg
8 x 10	Multi Curve	Shooter	2.94 lbs / 1.33 kg
8 x 10	Multi Curve	Full	3.26 lbs / 1.48 kg
10 x 12	Multi Curve	Shooter	4.60 lbs / 2.09 kg
10 x 12	Multi Curve	Full	4.91 lbs / 2.23 kg
SM	Multi Curve	SAPI	3.97 lbs / 1.80 kg
MD	Multi Curve	SAPI	4.58 lbs / 2.08 kg
LG	Multi Curve	SAPI	5.24 lbs / 2.38 kg
XL	Multi Curve	SAPI	5.94 lbs / 2.70 kg

Tolerances: +/- .25" - +/- 0.25 lbs



**SLATE
SOLUTIONS**

7060 W. State Road 84, Suite 12, Davie, FL 33317
info@SlateSolutions.com | SlateSolutions.com

754.200.6752