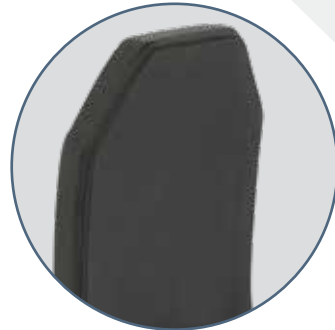
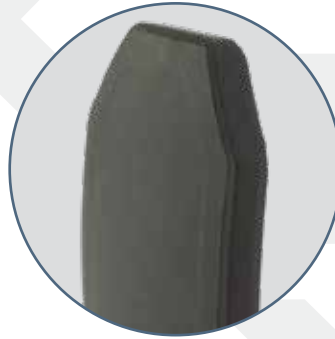




**SLATE
SOLUTIONS**

H3201

Level III+ Plate



FEATURES

- ◊ Made with Ceramic and UHMWPE materials which are processed to create a lighter, thinner, high performing plate
- ◊ NIJ 0101.06 Level III+, Model H3201
- ◊ Multi-Curve design fits to the contours of the body for maximum safety and comfort
- ◊ Rugged, reliable, and stress fracture resistant
- ◊ Fully sealed to protect against liquids, chemicals, and harsh elements

Special Threat Performance

- ◊ 5.56 x 45mm, 55gr M193 Ball
- ◊ 5.56 x 45mm, 62gr, M855 Green Tip
- ◊ 7.62 x 39mm, 123gr, MSC

Specifications

- ◊ NIJ Level III+
- ◊ Stand Alone
- ◊ Multi-Curve
- ◊ Thickness: 1"

Size and Weight Chart

Size	Curvature	Cut	Weight
6 x 6	Multi-Curve	Full	1.44 lbs / 0.65 kg
6 x 8	Multi-Curve	Full	1.94 lbs / 0.88 kg
8 x 10	Multi-Curve	Shooter	2.94 lbs / 1.33 kg
8 x 10	Multi-Curve	Full	3.26 lbs / 1.48 kg
10 x 12	Multi-Curve	Shooter	4.60 lbs / 2.09 kg
10 x 12	Multi-Curve	Full	4.91 lbs / 2.23 kg
SM	Multi-Curve	SAPI	3.97 lbs / 1.80 kg
MD	Multi-Curve	SAPI	4.58 lbs / 2.08 kg
LG	Multi-Curve	SAPI	5.24 lbs / 2.38 kg
XL	Multi-Curve	SAPI	5.94 lbs / 2.70 kg

Tolerances: +/- .25" - +/- 0.25 lbs



**SLATE
SOLUTIONS**

7060 W. State Road 84, Suite 12, Davie, FL 33317
info@SlateSolutions.com | SlateSolutions.com

754.200.6752