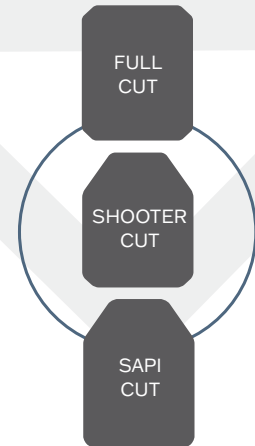
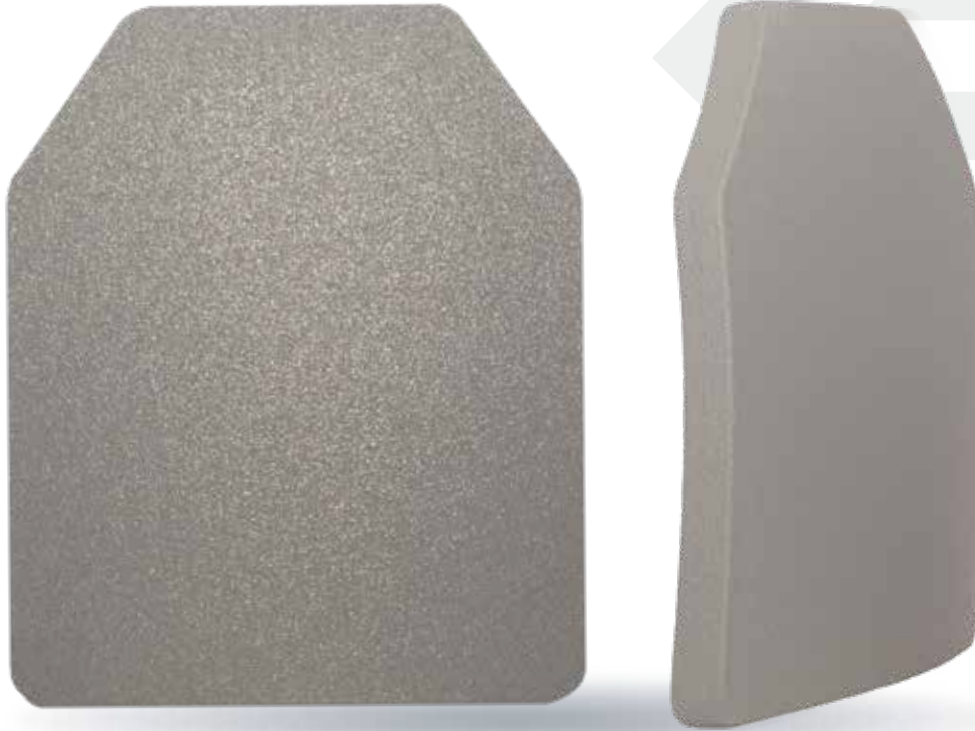




**SLATE
SOLUTIONS**

SS H4001-1

Level III Plate



FEATURES

- ◇ Made with UHMWPE fabrics and special pressing techniques to create a lighter and thinner plate
- ◇ NIJ 0101.06 Certified Level III, Model H4001-1
- ◇ User-friendly design fits to the contours of the body for maximum safety and comfort
- ◇ Rugged, reliable, and stress fracture resistant
- ◇ Fully sealed to protect against liquids, chemicals, and harsh elements

Special Threat Performance

- ◇ 5.56 x 45mm (M193 Ball)
- ◇ 7.62 x 39mm M43 (MSC)
- ◇ 7.62 x 51mm (M-80 Ball)

Specifications

- ◇ NIJ Level III
- ◇ Stand Alone
- ◇ Single and Multi-Curve
- ◇ Thickness: 0.95"
- ◇ 10 year Warranty

Size and Weight Chart

| Size | Curvature | Cut | Weight |
|---------|--------------|---------|-------------------|
| 6 x 6 | Single Curve | Full | 1.0 lbs / 0.45 kg |
| 6 x 8 | Single Curve | Full | 1.3 lbs / 0.59 kg |
| 8 x 10 | Multi Curve | Shooter | 2.0 lbs / 0.90 kg |
| 8 x 10 | Multi Curve | Full | 2.2 lbs / 0.99 kg |
| 10 x 12 | Multi Curve | Shooter | 3.2 lbs / 1.45 kg |
| 10 x 12 | Multi Curve | Full | 3.4 lbs / 1.54 kg |
| XS | Multi Curve | SAPI | 2.2 lbs / 0.99 kg |
| SM | Multi Curve | SAPI | 2.7 lbs / 1.22 kg |
| MD | Multi Curve | SAPI | 3.1 lbs / 1.40 kg |
| LG | Multi Curve | SAPI | 3.6 lbs / 1.63 kg |
| XL | Multi Curve | SAPI | 4.1 lbs / 1.86 kg |

Tolerances: +/- .25" - +/- 0.25 lbs



**SLATE
SOLUTIONS**

7060 W. State Road 84, Suite 12, Davie, FL 33317
info@SlateSolutions.com | SlateSolutions.com

754.200.6752