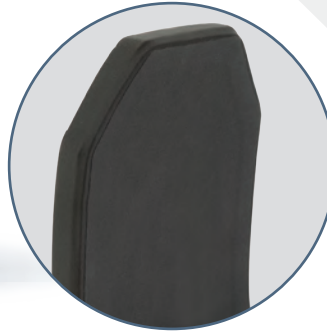




**SLATE
SOLUTIONS**

H3001

Level III Plate



FULL
CUT

SHOOTER
CUT

SWIMMER
CUT

FEATURES

- ◇ Made with UHMWPE fabrics and special pressing techniques to create a lighter and thinner plate
- ◇ NIJ 0101.06 Certified Level III, Model H3001
- ◇ User-friendly design fits to the contours of the body for maximum safety and comfort
- ◇ Rugged, reliable, and stress fracture resistant
- ◇ Fully sealed to protect against liquids, chemicals, and harsh elements

Special Threat Performance

- ◇ 7.62 x 39mm, 123gr, FMJ
- ◇ 5.56 x 45mm, 55gr M193 Ball

Specifications

- ◇ NIJ Level III
- ◇ Stand Alone
- ◇ Multi-Curve
- ◇ Thickness: 1"

Size and Weight Chart

Size	Curvature	Cut	Weight
6 x 6	Multi-Curve	Full	1.0 lbs / 0.45 kg
6 x 8	Multi-Curve	Full	1.3 lbs / 0.58 kg
8 x 10	Multi-Curve	Full	2.4 lbs / 1.1 kg
8 x 10	Multi-Curve	Shooter	2.2 lbs / 1.0 kg
10 x 12	Multi-Curve	Full	3.5 lbs / 1.6kg
10 x 12	Multi-Curve	Shooter	3.2 lbs / 1.45 kg
10 x 12	Multi-Curve	Swimmer	3.0 lbs / 1.4kg

Tolerances: +/- .25" - +/- 0.25 lbs



**SLATE
SOLUTIONS**

7060 W. State Road 84, Suite 12, Davie, FL 33317
info@SlateSolutions.com | SlateSolutions.com

754.200.6752

REV 5.23